



Egerton Gardens
Knightsbridge, SW3

Meticulously refurbished to exacting specifications, this is a best in class apartment on a world class address, with access to wonderful communal gardens.



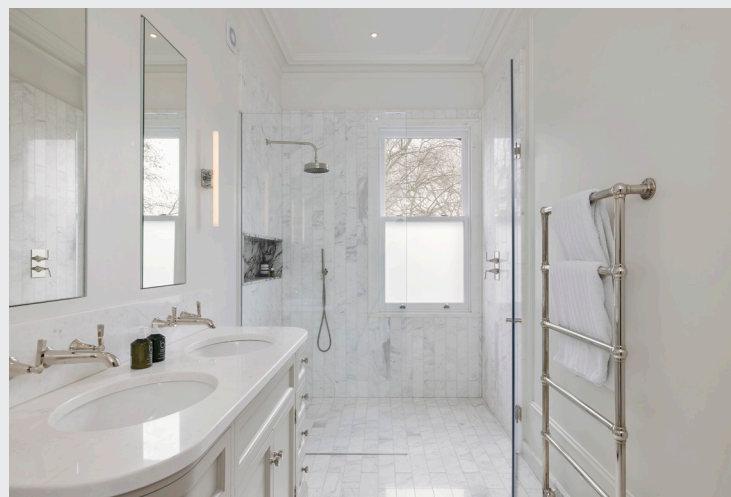
Accommodation and Amenities

- TURNKEY FINISH
- WONDERFUL VIEWS
- SHARE OF FREEHOLD
- FANTASTIC LOCATION

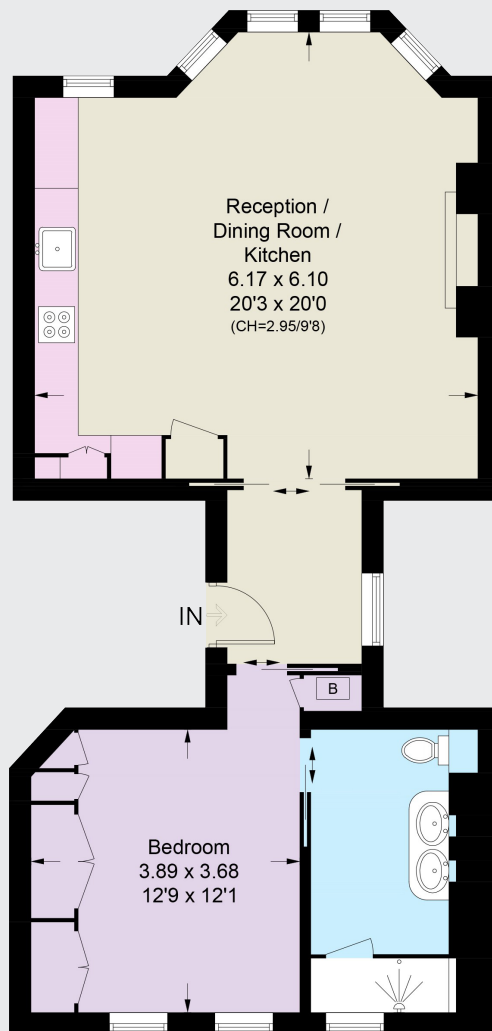
At the front is a fantastic open plan reception room and kitchen with Miele appliances, Quooker tap and a great outlook towards Egerton Gardens. Large windows flood this room with natural light and a beautiful parquet wood floor adds texture and substance to the room. A gas fireplace provides a focal point making this the perfect room in which to relax and entertain. There are other high quality appliances including an induction hob, wine fridge and combi microwave oven.

Quietly positioned at the rear is a very good double bedroom with excellent built in storage and an en-suite shower room. This room looks out over Mortimer House and offers lovely views which benefit from the afternoon light. The flat also benefits from access to the pretty and very well-maintained communal gardens opposite.

Egerton Gardens is peacefully located within easy reach of London's finest shops, bars and restaurants, as well as the areas numerous transport links. South Kensington station is 0.4 miles away.







Second Floor

APPROXIMATE FLOOR AREA

65.1 sq m / 701 sq ft
Including Limited Use Area (0.3 sq m / 3 sq ft)

TERMS

Asking Price £1,795,000

Tenure Share of Freehold

Service Charge TBC

Ground Rent TBC

EPC C

Local Authority The Royal Borough of Kensington & Chelsea

Let's talk Mortgages

Maskells has partnered with Private Finance, an independent mortgage broker, directly authorised with specialist knowledge and whole of market access.

CLICK HERE

Privatefinance@maskells.com

Your home may be repossessed if you do not keep up repayments on your mortgage



@maskellsea

Maskells

71 Walton Street,
London SW3 2HT
Tel: 0207 581 2216
sales@maskells.com
lettings@maskells.com

[maskells.com](https://www.maskells.com)

